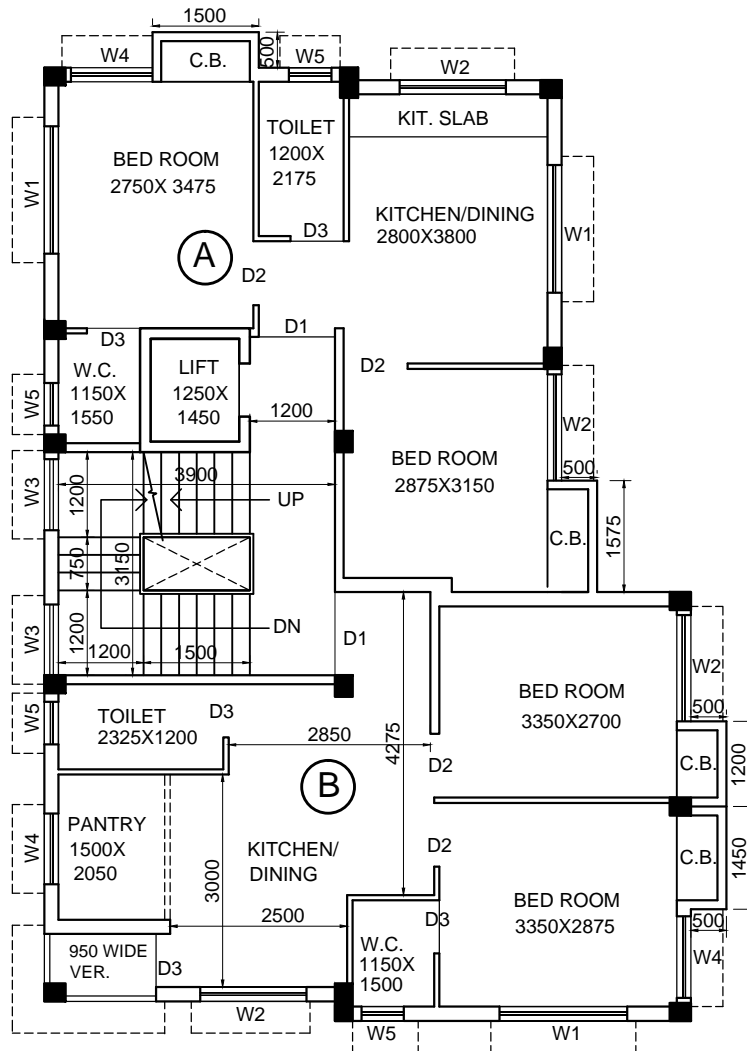


**G+III STORIED RESIDENTIAL BUILDING AT HOLDING NO - 1445,
 DHALUA MADHYA, AT MOUZA - DHALUA, R.S. DAG NO.-107(P),
 R.S. KHATIAN NO.-188, J.L NO.-43, WARD NO.-02, P.S.-SONARPUR,
 DIST.-SOUTH 24 PARGANAS,
 UNDER- RAJPUR SONARPUR MUNICIPALITY.**



**TYPICAL FLOOR PLAN
 (1ST. TO 3RD.)**

GROUND FLOOR STAIR, LIFT & LIFT LOBBY AREA (SQM.)	GROUND FLOOR SERVICE AREA (SQM.)	TOTAL (SQM.)
19.414	9.67	29.084

FLAT NAME	RERA CARPET AREA (SQM.)	NET FLAT AREA (EXCLUDING PROPORTIONATE COMMON AREA) (SQM.)	PROPORTIONATE COMMON AREA (TYP.FL.) EXCLUDING LIFT & STAIR WELL (SQM.)	PROPORTIONATE GROUND FLOOR COMMON AREA (SQM.)	BUILTUP AREA (SQM.)	SUPER BUILTUP AREA (ADD25%) (SQM.)	SUPER BUILTUP AREA (SFT.)
FLAT 1A/2A/3A	35.761 SQM./ 384 SQFT.	42.837	6.501	4.449	53.787	67.234	724
FLAT 1B/2B/3B	42.429 SQM./ 457 SQFT.	50.516	7.666	5.246	63.428	79.285	853